

## Installation of a Windows® 11 image

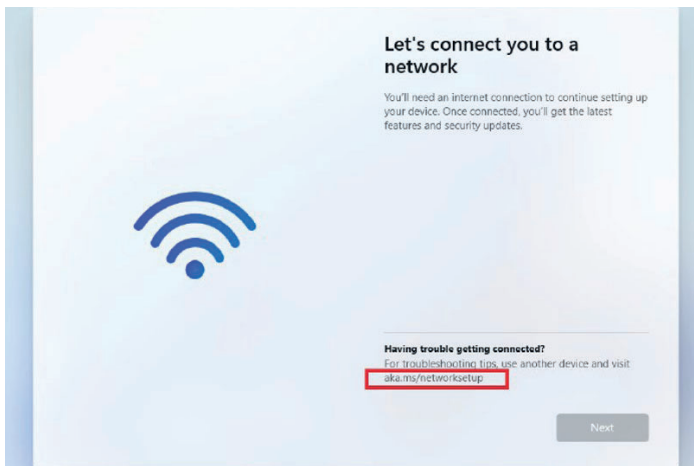
The installation of a Windows® 11 installation image requires an internet connectivity to succeed.

If there is no suitable Wi-Fi driver in this Windows® 11 image (no “inbox” driver), you need to connect via ethernet or manually add the Wi-Fi driver by following instructions on the OOBE page during installation ([aka.ms/networksetup](https://aka.ms/networksetup)) for the OS installation to succeed.

Windows® 10 does not require internet connectivity during installation. The correct Wi-Fi driver can be installed after installation of the OS.

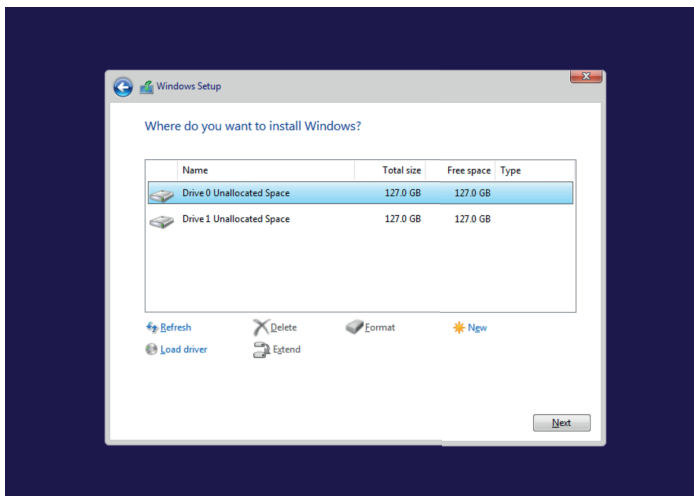
Use a wired Ethernet connection. If your PC has an Ethernet port, plug in an Ethernet cable, and then plug the other end into an Ethernet port on your router. If your PC doesn't have an Ethernet port but you want to try this option, you might consider getting a USB to Ethernet adapter.

If you don't see any Wi-Fi networks listed when you're setting up your PC and see an error message, you might need to reinstall Wi-Fi network adapter drivers.



Proceed as follows:

- On a different PC, download the necessary Wi-Fi network adapter drivers from the manufacturer's website.
- Unzip and copy the drivers to a USB flash drive, where the Windows® OS Installation Image is stored, into folder WLAN.
- On the PC you're setting up, plug the USB flash drive into a USB port on your PC, boot the device and start set up Windows®,



- During Disk Drive Setup, choose "Load Driver" option,
- Select the USB driver and folder WLAN and press OK,
- Select "Browse" to search for WLAN drivers,
- Once the correct driver is found, press Next,
- Finish the Disk Drive configuration with Next.
- Now, during Internet Connection Setup, your WLAN should be visible and you can continue Windows® installation.